

Economic Analysis of Tactile Pavement Markings

SH8 Between Twizel and Omarama

By David Jackways



Overview

- Background
- Site Description
- Traffic
- Crash History
- Analysis
- Pros and Cons
- Feedback



Background

- 1999 SAR
- 2001 Installation
- 2006 Update of SAR



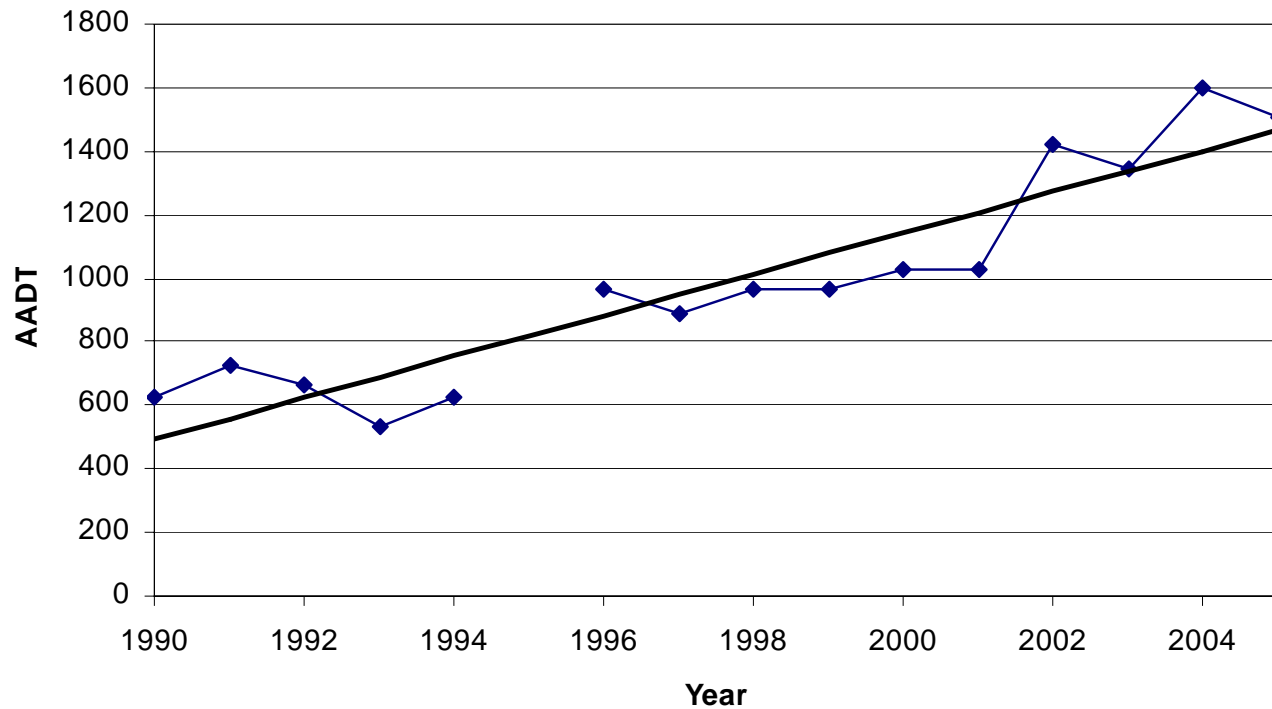
Site Description

- SH8
- Straight and flat
- 8.5m seal width
- Wide road corridor
- Power poles

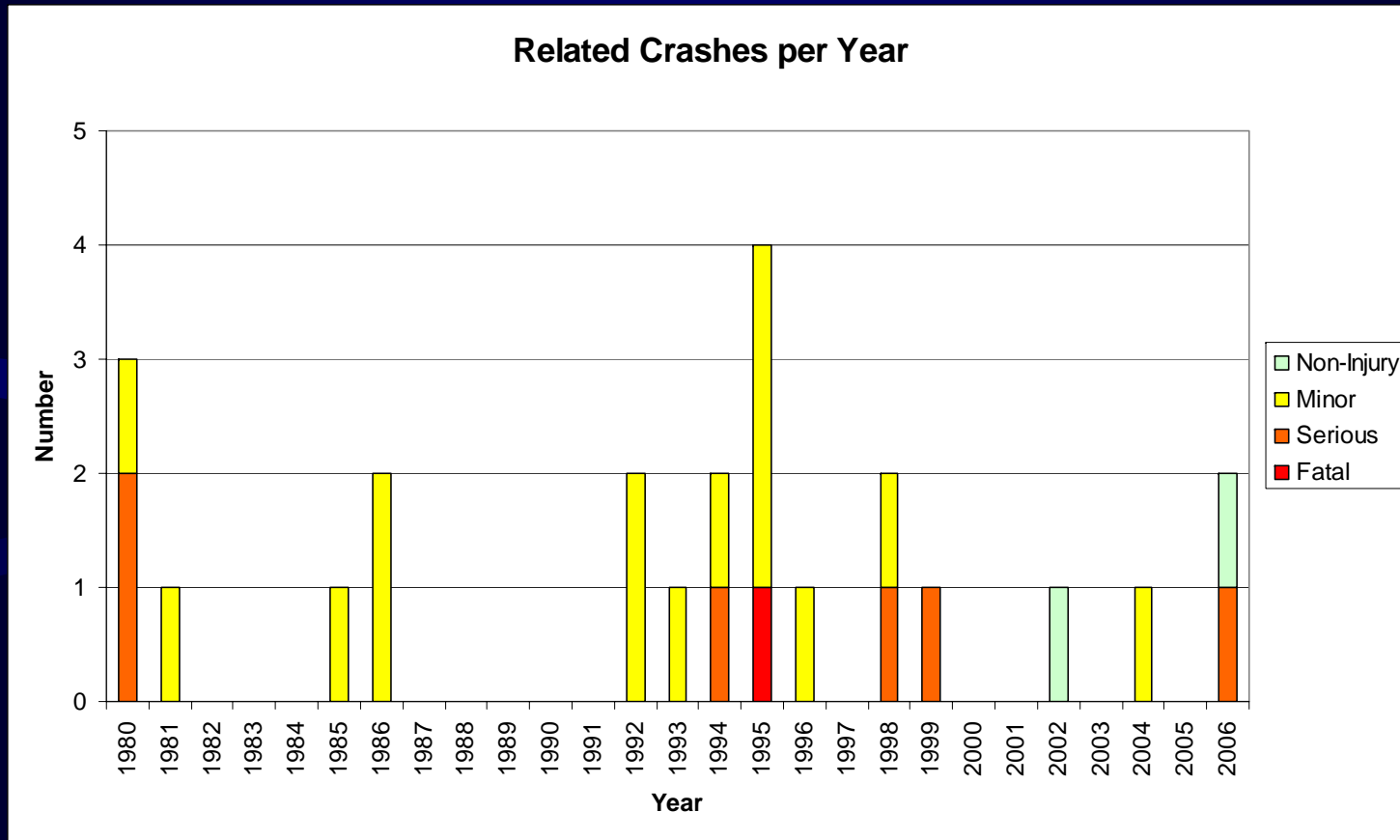


Traffic

SH 8 Traffic Data



Crash History



Fatigue/Inattention Crashes

- SAR (1994–1998) 1F, 2S, 6M & 1NI
- Before (1996–2000) 2S & 2M
- After (2001–2005) 1M & 1NI



Analysis

- SAR Assumptions
- Simplified Procedures used
- Before vs After Crash Analysis



Analysis

	SAR (1996)	2006
Crash Benefits	\$3.2 mil	\$7.5 mil
Do Min Cost	\$72,000	\$238,000
Option Cost	\$430,000	\$960,000
BCR	9.1	10.4
FYRR	74%	86%



Pros and Cons

- Pros
 - Alert drivers of edgeline
 - Visual presence
 - Maintained performance
- Cons
 - Reseals
 - Maintenance
 - Push drivers to centre



Feedback

- Positive feedback from Police
- Appropriate solution
- Comments or Questions??

