



journeyplanner.org.nz

Find the best way from A to B

Simon Kennett
Active Transport & Road Safety Coordinator
Greater Wellington



Quality for Life



The screenshot shows the website interface with the following elements:

- Header:** "cycling & walking journey planner" logo and "greater WELLINGTON REGIONAL COUNCIL" text.
- Navigation:** Home, About, About Us, Contact & Feedback.
- Search Area:** A dropdown menu showing "Wellington", "Hutt Valley", "Kapiti", "Porirua", "Wairarapa", and "Wellington". Below it is a "To" field and a "Get Directions" button.
- Map:** A map of the Wellington region with a highlighted route connecting several points.
- Suggested Journeys:**
 - 1 Pāremarua Downs to Wihareia Eggs Cemetery via Ara Māhaka:** Includes a link to "View journey" and "1.0 km (17 minutes)".
 - 2 Route to Parklands via Queen Elizabeth Park:** Includes a link to "View journey" and "6.4 km (1 hour 15 minutes)".
 - 3 Marerua Mare to Porirua Park via Cameron Creek Wharf:** Includes a link to "View journey" and "3.8 km (10 minutes)".
- Footer:** "Quality for Life", "journeyplanner.org.nz", and "greater WELLINGTON REGIONAL COUNCIL" logo.

Cycling and Walking Journey Planner - Greater Wellington Regional Council - Wellington, New Zealand

Home | About Us | Contact Us | Privacy Policy | Terms of Use | Accessibility

greater WELLINGTON REGIONAL COUNCIL

Wellington
 Hutt Valley
Kapiti
 Porirua
 Wairarapa
 Wellington

Map

1 Connection Domain to Whenua tapu Cemetery via Ara Harakeke
 Introduction to Porirua's award winning Ara Harakeke, flaxen pathway. [4.0 km] [47 minutes]

2 Raumatī to Paekakariki via Queen Elizabeth Park
 Explore historic Queen Elizabeth Park, enjoy views of Kapiti Island and delight in the seaside village of Paekakariki. [6.4 km] [1 hour 16 minutes]

3 Marareroa Marae to Porirua Park via Cannons Creek Shops
 From Marareroa marae, there are shops and the entrance to Belmont Regional Park at Cannons Creek. Watch the rugby at Porirua park. [4.6 km] [55 minutes]

Quality for Life

greater WELLINGTON REGIONAL COUNCIL

Cycling and Walking Journey Planner - Greater Wellington Regional Council - Wellington, New Zealand

Home | About Us | Contact Us | Privacy Policy | Terms of Use | Accessibility

greater WELLINGTON REGIONAL COUNCIL

Get Directions >

Journeys

Try these **Walking** | **Cycling** journeys.

1 **Plimmerton Domain to Whenua tapu Cemetery via Ara Harakeke**
 Introduction to Porirua's award winning Ara Harakeke, flaxen pathway.
 [4.0 km] [47 minutes]

2 **Rauatī to Paekakariki via Queen Elizabeth Park**
 Explore historic Queen Elizabeth Park, enjoy views of Kapiti Island and delight in the seaside village of Paekakariki.
 [6.4 km] [1 hour 16 minutes]

3 **Marareroa Marae to Porirua Park via Cannons Creek Shops**
 From Marareroa marae, there are shops and the entrance to Belmont Regional Park at Cannons Creek. Watch the rugby at Porirua park.
 [4.6 km] [55 minutes]

Map

greater WELLINGTON REGIONAL COUNCIL

Cycling and Walking Journey Planner - Greater Wellington Regional Council - Windows Internet Explorer

http://www.journeyplanner.org.nz/

Links Dashboard - Google Analytics GWRC Journeyplanner Blog Journey Planner Journeyplanner Blog - Log In ProjectK Last_choice_crash_car_booking_sheet v05

Cycling and Walking Jour... x Cycling and Walking Journey...

Home Intro More Maps Blog Terms Contact & Feedback

cycling&walking journey planner greater WELLINGTON REGIONAL COUNCIL

Wellington City Print Map | Share Journey: Email | Link | Facebook | Twitter | LinkedIn

Walking | Cycling directions

From: A 80 Brougham St, Mt Victoria

To: B 3 C Moxham Ave, Hataitai

+ Add destination

Get Directions >

Journeys Directions

Shortest Walking | Cycling Directions
80 Brougham St to 3 C Moxham Ave
1.4 km - about 17 mins at average pace

A 80 Brougham St
Mt Victoria

Head South-West on Brougham Street past
Armour Avenue 0.2 km

Continue on Brougham Street 0.2 km

Weather Map Legend Map

Map data ©2010 MapData Sciences Pty Ltd, PSMA - Terms of Use

80 Brougham St to 3 C Moxham Ave

Elevation Calories Health Car Costs Carbon

height (m)

Done

Start | Inbox - Microsoft Out... | RE: Regional Road Saf... | Document1 - Microsoft... | Cycling and Walking... | Document2 - Microsoft... | Internet | 100% | 4:56 p.m.

Cycling and Walking Journey Planner - Greater Wellington Regional Council - Windows Internet Explorer

http://www.journeyplanner.org.nz/#

Links Dashboard - Google Analytics GWRC Journeyplanner Blog Journey Planner Journeyplanner Blog - Log In ProjectK Last_choice_crash_car_booking_sheet v05

Cycling and Walking Jour... x Cycling and Walking Journey... | Brougham St to Taurima St - ...

Home Intro More Maps Blog Terms Contact & Feedback

cycling&walking journey planner greater WELLINGTON REGIONAL COUNCIL

Wellington City Print Map | Share Journey: Email | Link | Facebook | Twitter | LinkedIn

Walking | Cycling directions

From: A 80 Brougham St, Mt Victoria

To: B 3 C Moxham Ave, Hataitai

+ Add destination

Get Directions >

Journeys Directions

Shortest Walking | Cycling Directions
80 Brougham St to 3 C Moxham Ave
1.7 km - about 20 mins at average pace

Via (remove all)
at Selected location in Mt Victoria (remove)

A 80 Brougham St
Mt Victoria

Head North-East on Brougham Street towards
Pirie Street 9 m

Weather Map Legend Map

Map data ©2010 MapData Sciences Pty Ltd, PSMA - Terms of Use

80 Brougham St to 3 C Moxham Ave

Elevation Calories Health Car Costs Carbon

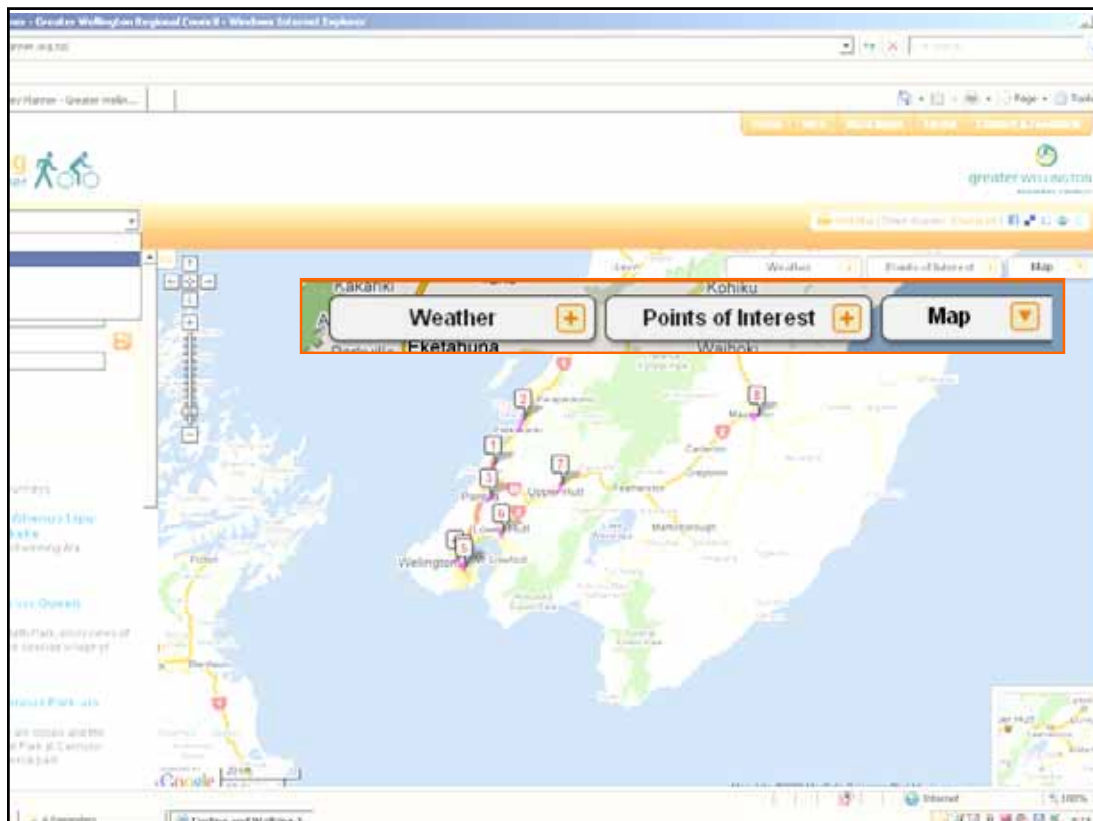
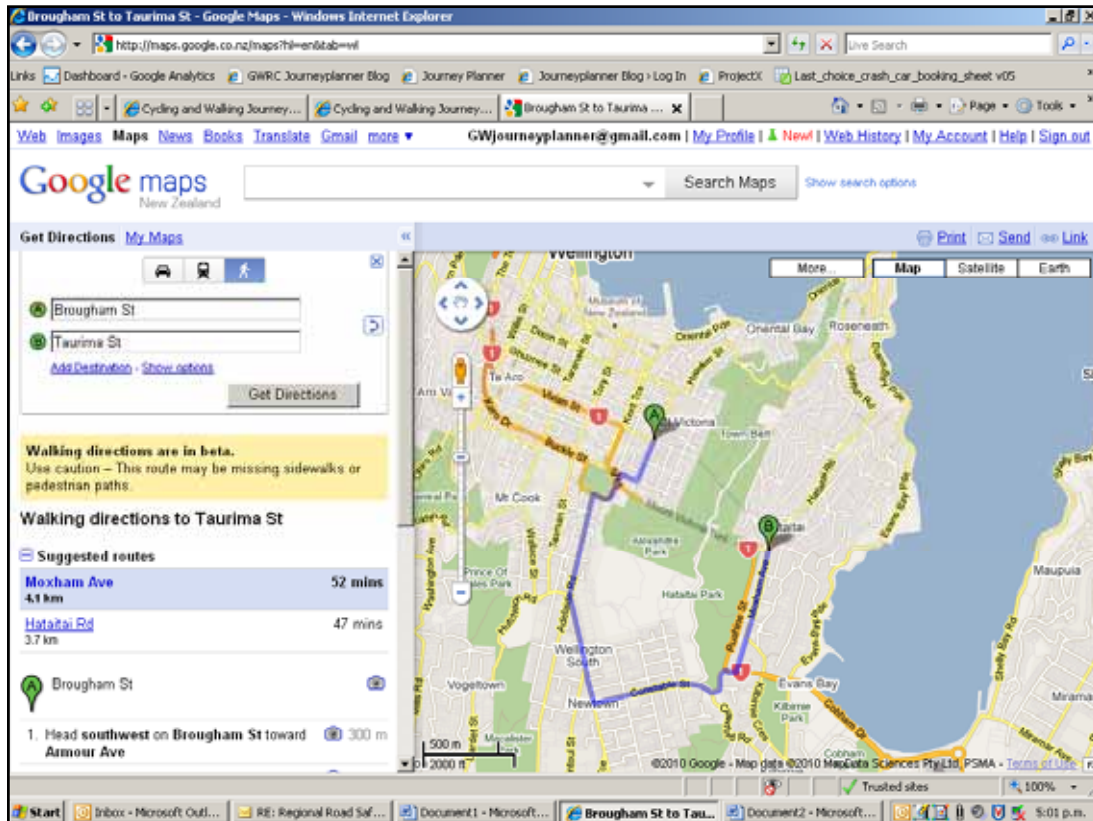
Vehicle cost savings per trip: \$1.16

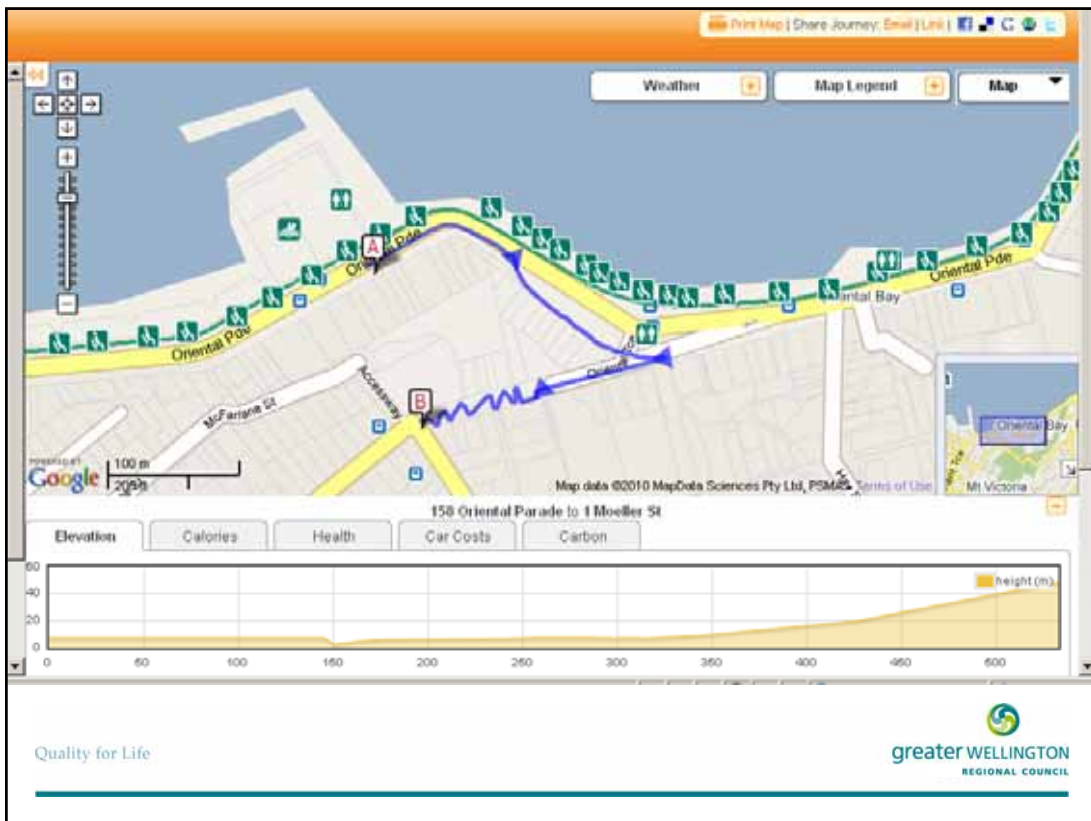
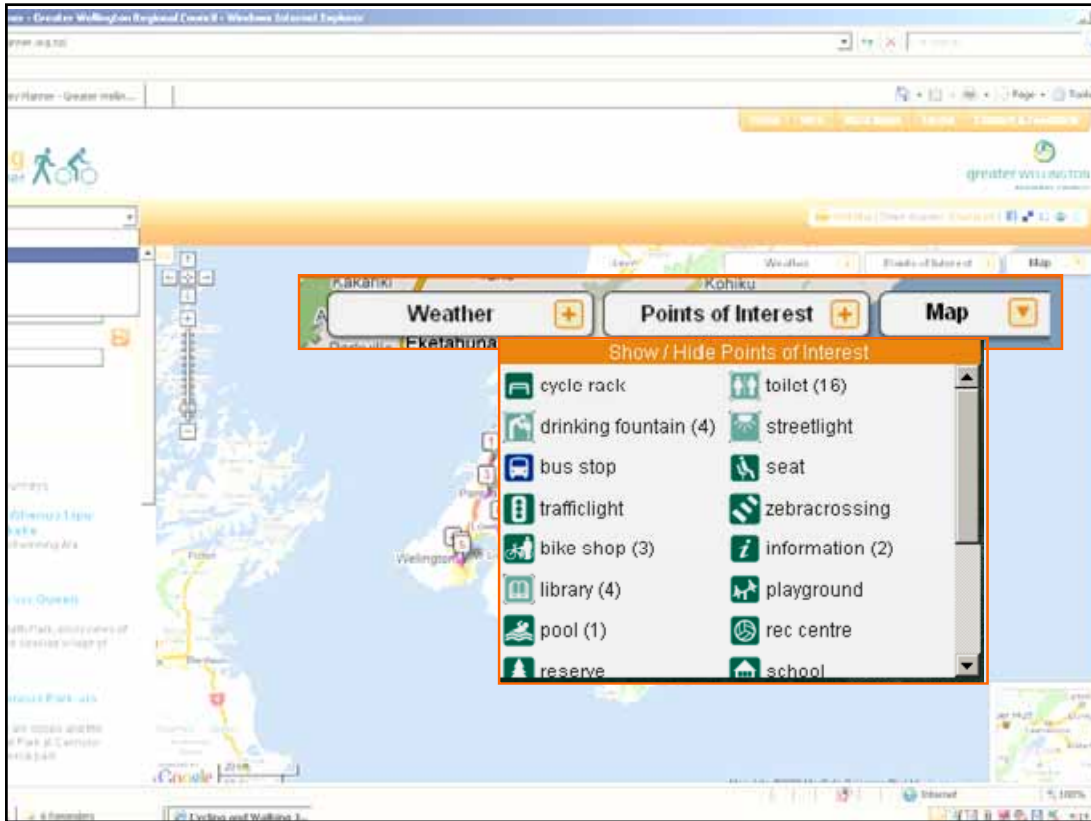
Vehicle cost savings per year, based on 3 trips back and forth weekly: \$361.74

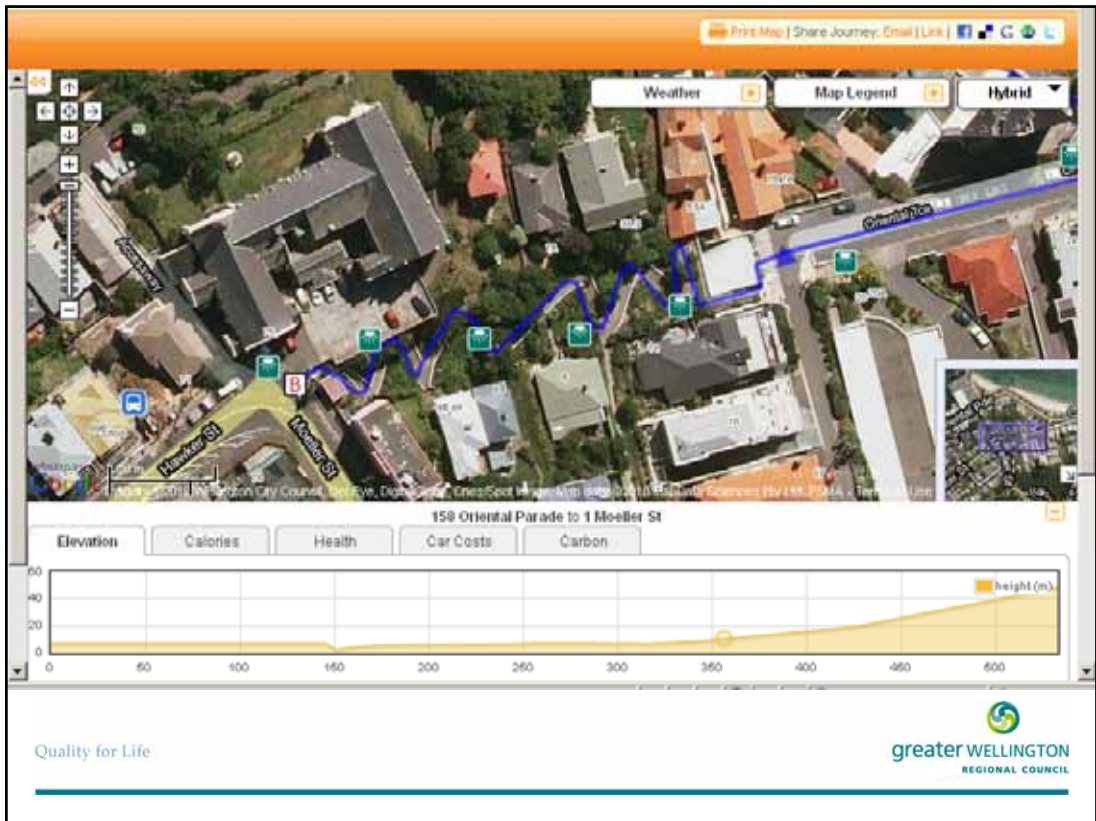
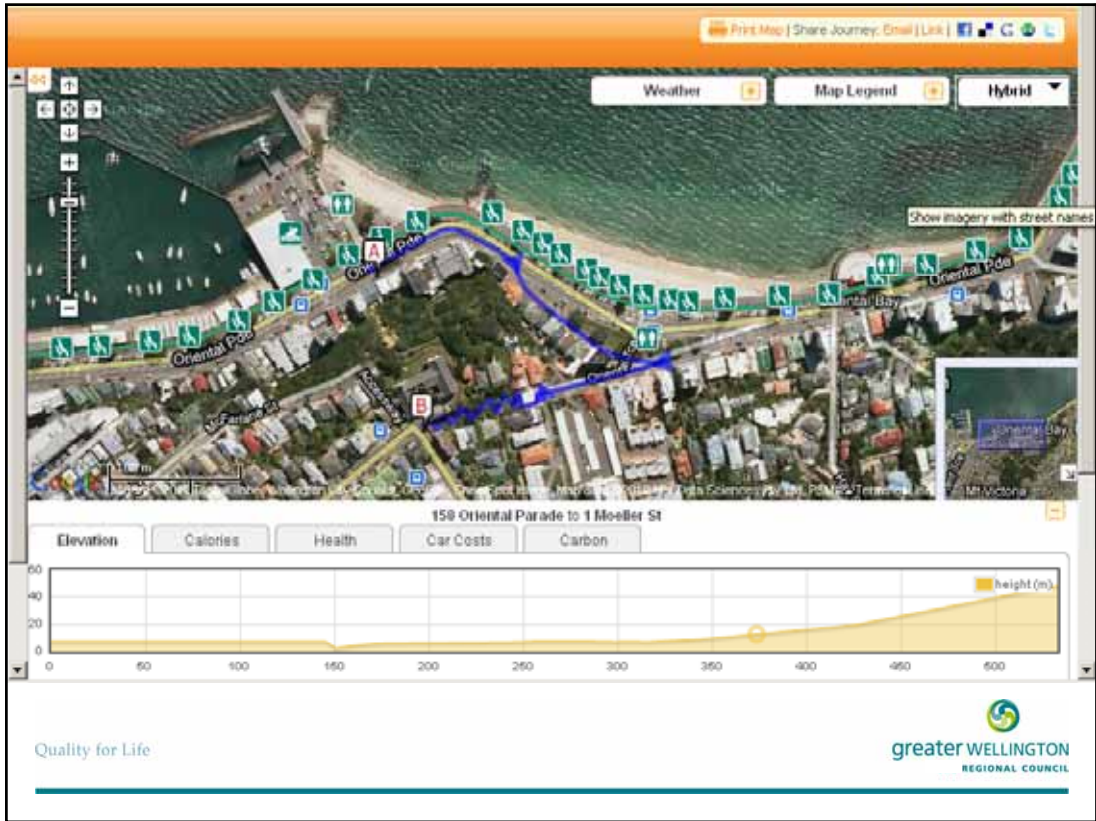
Based on NZTA's standard motor running costs of 70c/km, and cycling cost of 56c/km (details - new window).

Done

Start | Inbox - Microsoft Out... | RE: Regional Road Saf... | Document1 - Microsoft... | Cycling and Walking... | Document2 - Microsoft... | Internet | 100% | 5:03 p.m.







Questions?



Quality for Life



Kia ora.
Thank you.

Quality for Life

