

2. TA or TIA or...



- Transport assessment
 - Transport impact assessment
 - Transportation assessment
 - Traffic impact assessment
 - Traffic impact study
 - Traffic report
- (interchange 'transport' with 'transportation' and or 'traffic')

2. ...ITA



- Integrated Transport Assessment (ITA) is a specific methodology for the assessment of transportation **issues and effects in New Zealand.**

2. Authors



- Malcolm Douglass (Consulting Planner and Engineer)
 - Douglass Consulting Services Limited
- Ian Clark (Consulting Engineer)
 - Flow Transportation Specialists Limited
- Steve Abley (Consulting Engineer)
 - Abley Transportation Consultants Limited

2. Peer Reviewers



- Peter McCombs (Consulting Engineer)
 - Traffic Design Group Limited
- Bob Batty (Consulting Planner)
 - Planit RW Batty and Associates Limited
- Stuart Woods (Consultant)
 - Now MWH, was Christchurch City Council

2. Steering Group



- Chris Freke
 - Manukau City Council
- Tony Brennand
 - SKM
- Steve Spence
 - Wellington City Council
- John Winter
 - Wintertime Limited
- Dave Gamble
 - Traffic Plan Limited

2. ITA Framework (is)



- NZ methodology for how to assess transportation effects.
- Includes the scope of assessment.
- Clearly links with New Zealand legislation.

2. ITA Framework (is not)



- Is NOT prescriptive.
- Does NOT replace ARTA guide.
- Does NOT replace NZTA (Transit) Planning Policy Guide

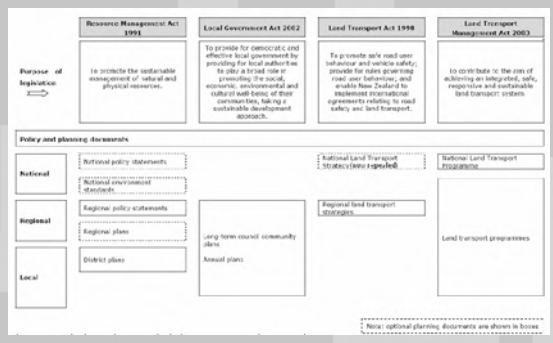
• (Probably does replace Beca guidance, and goes a long way to fulfilling needs of other two)

2. Parts of the Research



1. Literature Review (required for research)
2. Framework (ITA methodology)
3. Practice Notes (on going and developing)

2. NZ Legislation



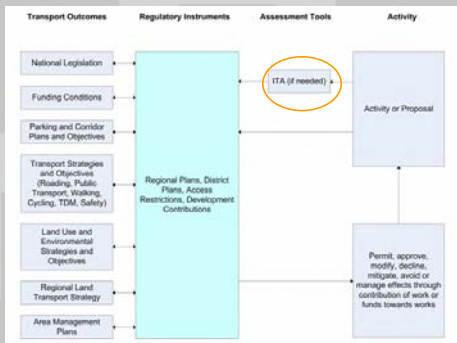
2. NZ Legislation



Type-of Consent	Compliance	Off Site Effects	Policy Issues	Council Decision	Specific Conditions	
Permitted	Complies	Nil	Nil	Yes	Nil	
Controlled	Restrictions specified	Minor	Minor	Yes	Minor conditions	
Restricted Discretionary	Detailed consent specified	Minor	Minor	Yes or No	Limited conditions	
Discretionary	Meets zone compliance	Zone compliance	Manage effects off site	Significant	Yes or No	Consider with conditions
Non-Complying	Not in zone	May need off site work to be appropriately mitigated	Basic policy issues	Significant	Yes or No	Likely to be significant
Prohibited	Is not allowed	May be major	Very significant	Not allowed	N/A	

Type-of Consent	Entity	Off Site Effects	Policy Issues	Council Decision	Conditions
Change	Council or private	Off-site (see Part of Sec 32)	Yes	Yes or No	New Rules
Variation	Council	Off-site (see Part of Sec 32)	Yes	Yes or No	New rules
Consent	Utility (not)	Off-site (see Part of Sec 32)	No-Sometimes	Provide recommendation	Conditions

2. ITA is NOT an Industry



2. ITA Informs RMA



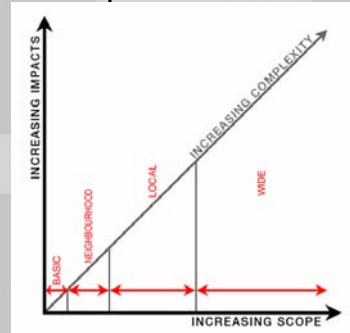
- S32 Benefits and costs
- S42A report prepared on application by council or consultant
- S93-94 notification
- S104 Consideration
- S108 Conditions of consent
- S293 Environment court changes

3. ITA Scope



- **Basic** – the proposal will have impact at a point.
- **Neighbourhood** – the proposal will have impact over a small area.
- **Local** – the proposal will have impact over a larger area.
- **Wide** – the proposal will have impact over a wide area.

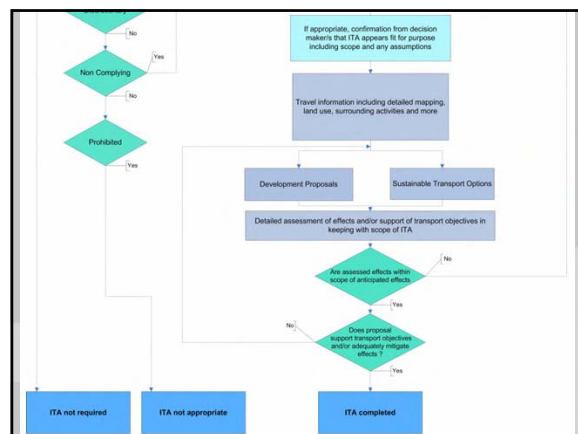
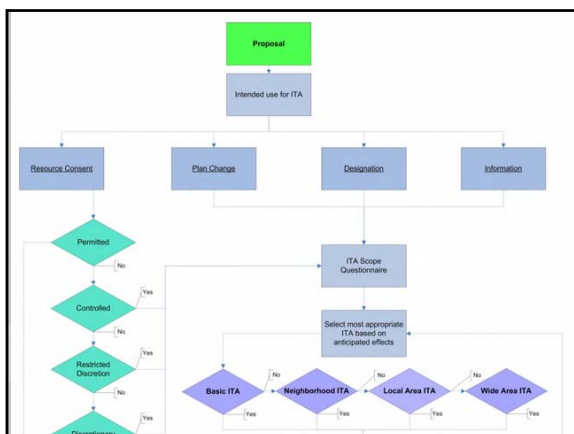
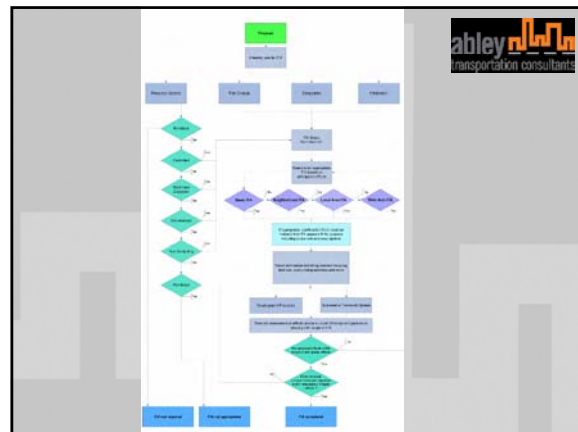
3. ITA Scope



3. ITA Scope and Planning



	Basic	Neighborhood	Local	Wide	
Resource Consent	Permitted	Not Required			
	Controlled	Not Required			
	Limited Discretion	Not Required			
	Discretionary	Not Required			
	Non Complying	Not Required			
	Prohibited	Not Appropriate			
Plan Change/Variation	Not Appropriate				
Designation	Not Appropriate				
Information	Not Appropriate				



4. Content

- Background
- Existing land data
- Existing transport data
- Committed environmental changes
- Existing travel characteristics
- Proposal Details
- Predicted travel data
- Appraisal of transportation effects
- Avoiding or Mitigating Actions
- Compliance with policy and other frameworks
- Discussion and Conclusions
- Recommendations



4. Content

ITA Scope?	Matter for consideration	ITA Scope			
		Basic	Local	Wide	District
✓	1. Background				
✓	Description of proposed activity				
✓	Proposed site for ITA				
✓	Outline of discussions with RCAs and TAs				
	2. Existing land data				
✓	Location Plan				
✓	Site plan				
✓	Existing use				
✓	Existing constraints				
✓	Adjacent land use				
✓	Surrounding land use				
	3. Existing transport data				
✓	Walking network				
✓	Cycling network				
✓	Public transport modes and accessibility				
✓	Access Arrangements				
✓	Service accesses				
✓	Car parking on site				
✓	Car parking off site				
✓	Cycle parking				
✓	Routing hierarchy				
✓	Traffic flow				
✓	Travel times				
✓	Congestion				
✓	Crash records				
	4. Committed environmental changes				
✓	Walking network				
✓	Cycling network				
✓	Public transport modes and accessibility				
✓	Local network environments				
✓	Other local (part of fully unimplemented) developments				
✓	Other regional (part of fully unimplemented) developments				
✓	Falls off of local land				



4. Content

ITA Scope?	Matter for consideration	ITA Scope			
		Basic	Local	Wide	District
	5. Existing travel characteristics				
✓	Existing person trip generation				
✓	Existing modal split				
✓	Existing vehicle trip generation				
✓	Existing trip type proportions				
✓	Existing trip distribution				
✓	Existing trip assignment				
✓	Existing special event trip generation				
	6. Proposal details				
✓	Site layout				
✓	Schedule of land or activity uses				
✓	Operational hours				
✓	Special events				
✓	On site car parking				
✓	On site cycle parking				
✓	Cramp off area				
✓	Access				
✓	Service accesses				
✓	Internal vehicle circulation				
✓	Proposed implementation phasing				
✓	Construction management				
	7. Predicted travel data				
✓	Adjustment of existing travel data to assessment year				
✓	Predicted person trip generation				
✓	Predicted modal split				
✓	Predicted vehicle trip generation				
✓	Predicted trip type proportions				
✓	Predicted trip distribution				
✓	Predicted trip assignment				
✓	Predicted special event trip generation				
	8. Appraisal of transportation effects				
✓	Environmental				
✓	Safety				
✓	Accessibility				
✓	Integration				
✓	Economic				
✓	Sensitivity testing				



4. Content

ITA Scope?	Matter for consideration	ITA Scope			
		Basic	Local	Wide	District
	9. Avoiding or mitigating actions				
✓	Physical on site mitigations				
✓	Physical off site mitigations				
✓	Encouraging public transport, walking and cycling				
✓	Travel plans				
✓	Special event mitigation				
✓	Revised environmental effects				
✓	Revised safety effects				
✓	Revised accessibility effects				
✓	Revised integration effects				
✓	Revised economic effects				
✓	Sensitivity testing mitigations				
	10. Compliance with policy and other frameworks				
✓	District Plan Rules				
✓	District Plan Objectives and Policies				
✓	Other relevant local strategies				
✓	Regional Land Transport Strategy				
✓	Other relevant regional strategies				
✓	Other relevant national strategies				
	11. Discussion and Conclusions				
✓	Assessment of effects				
✓	Conclusion of effects				
	12. Recommendations				
✓	Summary				
✓	Proposed conditions (if any)				



5. Questions

