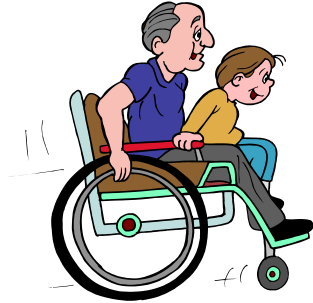
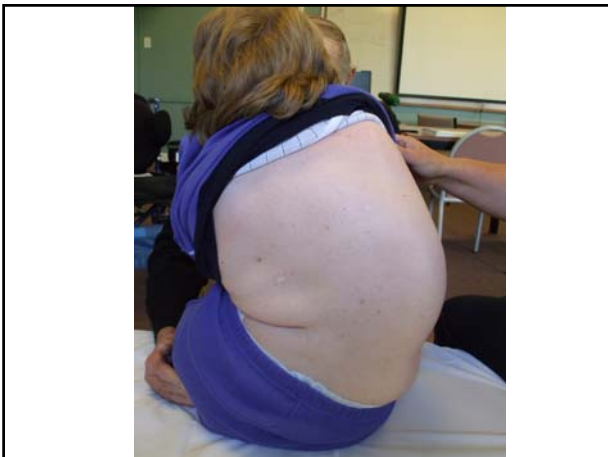


A WHEELIE GOOD SERVICE



Wheelchair and Seating Outreach Service

- A travelling service for Ministry of Health clients / assessors (Occupational Therapists and Physiotherapists)
- Offers assessors / subcontractors – support, skills, education, product knowledge
- Coordination of equipment, modifications, applications
- Technical support







ROSEMARY

- 17 years old: about to leave school, and considering her future
- Wants to envision a life that excludes full dependence on her parents
- Wants to continue in tertiary education
- Wants to live a life on her terms, mobile, with some control over her environment

Choice of Wheelchair

- Manual or power
- Self propelling or transit
- Rear Wheel Drive or Mid Wheel Drive
- Tilt in space?
- Powered high-low?
- Powered elevating leg rests?
- Powered recline?

Chair with tilt



Chair with high-low



Control of Powered Chair

- Joystick
- Mini-joystick, finger control, proximity control
- Chin control
- Head array
- Use of display
- Single switch with scanner



NASC

- Refer clients to Specialised Assessors (Occupational Therapists and Physiotherapists)
- Be aware of clients mobility needs and posture
- Consider the clients ability to function and level of independence
- Consider the clients environment

